

Avion brought to life!

"The Intex team were great to work with, deliveries were on time and the products performed exactly as we needed. Their metal products are reliable, durable and meet industry requirements, which gave us real confidence on site."

Ben G, Operations Manager, Ever Glory.

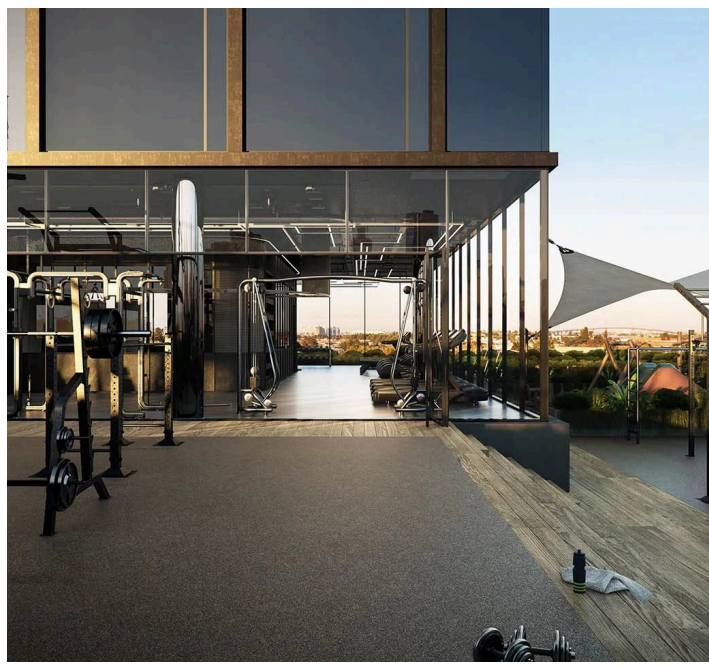
[View Project](#)

The Avion

SOUTH MELBOURNE, VICTORIA

Designed to perform under the demands of large scale construction, it gave our contracting partners, *Ever Glory Construction* and *Alpine Plastering Carpentry*, complete confidence in the Intex system throughout this build

[build with confidence]



Engineered for structural integrity:

Industry leading solutions across major projects and large scale builds. Our Stud and Track system is designed for strength, durability and full compliance with the Building Code of New Zealand (NZBC).



The versatile system built in:

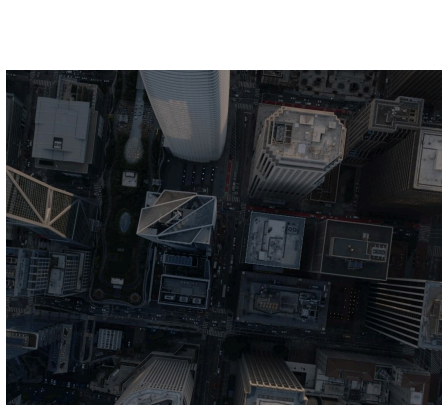
Intex Stud and Track is available in a wide range of size and BMT options to suit all applications. This flexibility allows partners to specify exactly what they need for their projects.

EXPLORE THE AVION

[View Project](#)

Let us bring your project to life!

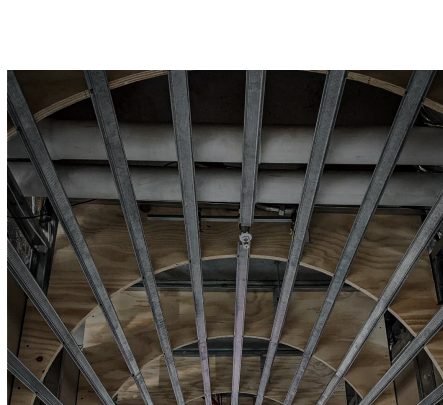
[Contact Us](#)



Campaign

Build with Confidence

[Watch Video](#)



Framing

Intex Framing Products

[View Now](#)



Projects

All Projects

[View Now](#)